

# BigRep User Interface 0.8.x

## Step 1. Update the Software

**Note:**

You will need a PC keyboard and Internet access to update the software

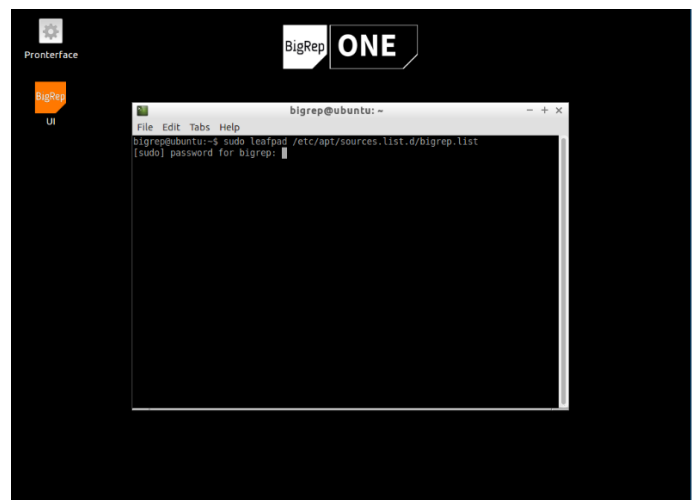
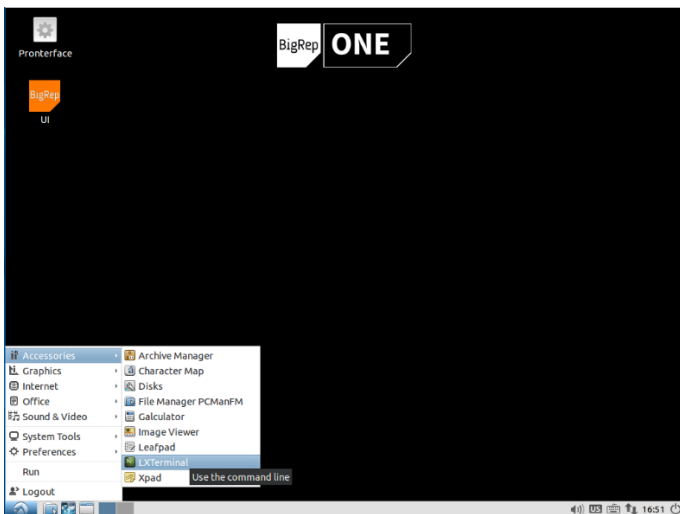
To download and install the Software update, please follow carefully the instructions below:

1. Connect the printer with a LAN-cable with internet access and start the printer
2. Connect the keyboard to the printer USB port
3. Make sure to exit the GUI Interface by clicking at "Turn off" and "Exit UI" and close Pronterface
4. Click on the "Home" menu that you can find on the bottom left corner of your Linux desktop and select "Accessories".
5. Type on the terminal:  

```
sudo leafpad /etc/apt/sources.list.d/bigrep.list
```

and press "enter"
6. Enter password "hnr4main" (password will not be shown while it is being written) and press "enter"

Finally press on "LXTerminal"



7. Replace the line

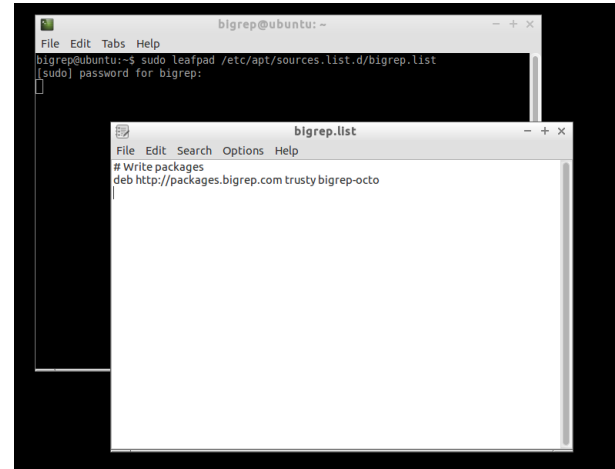
```
deb http://packages.bigrep.com trusty bigrep
```

with

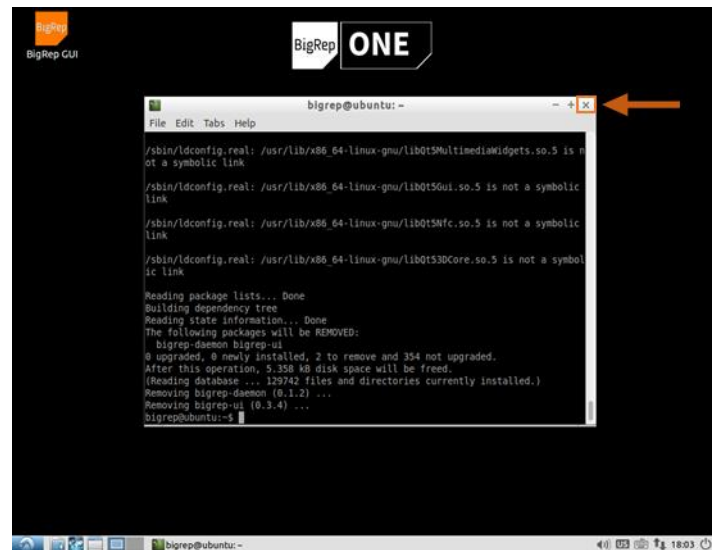
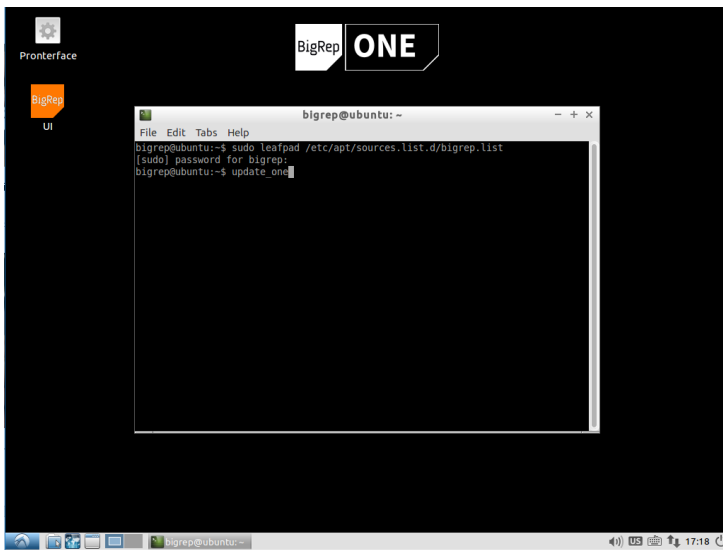
```
deb http://packages.bigrep.com trusty bigrep-octo
```

8. Save the file (File > Save) and close it

9. To update the software, enter `update_one` and press “enter”



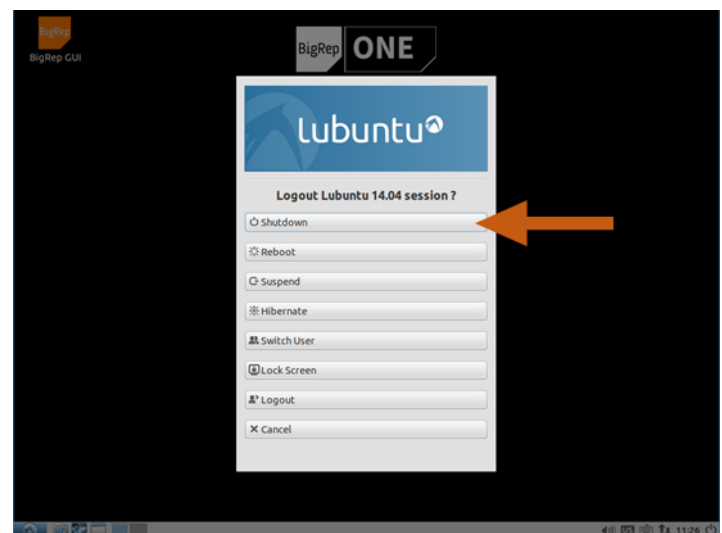
10. When the process is finished, close the *LXTerminal*



11. Once the software is updated, restart the machine twice in a row:

- Click on Home > Logout > Shutdown
- Turn off the machine using the main switch on the back of the printer
- Wait 30 seconds
- Turn on the machine
- Repeat the process a second time

**Note!** It is important to do both restarts: The first one updates the main control software, the second updates the motor control software.

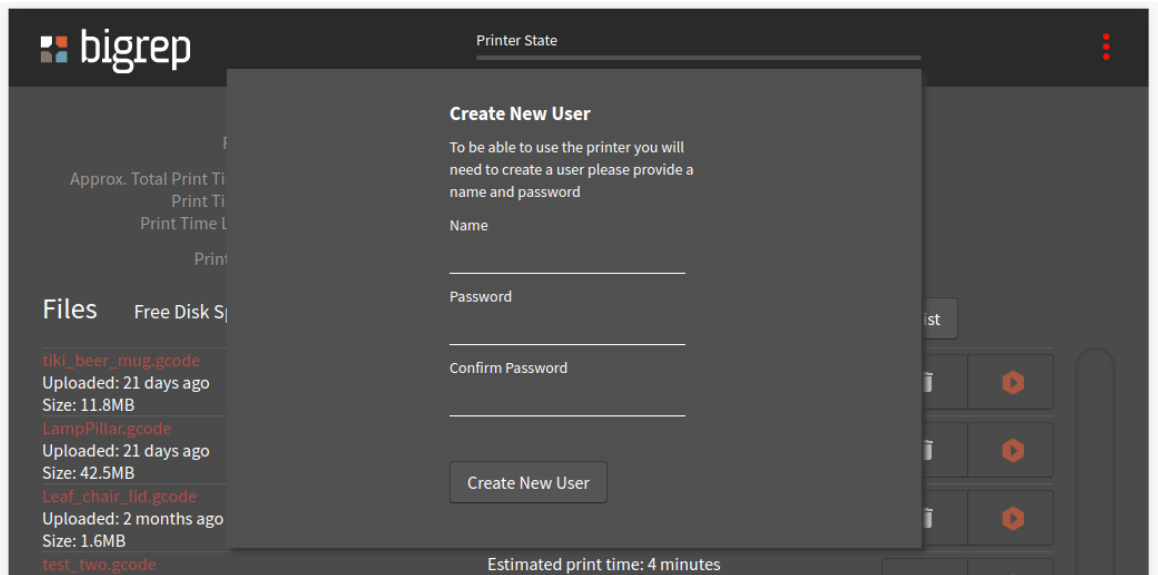


## Step 2. Create an Administrator User

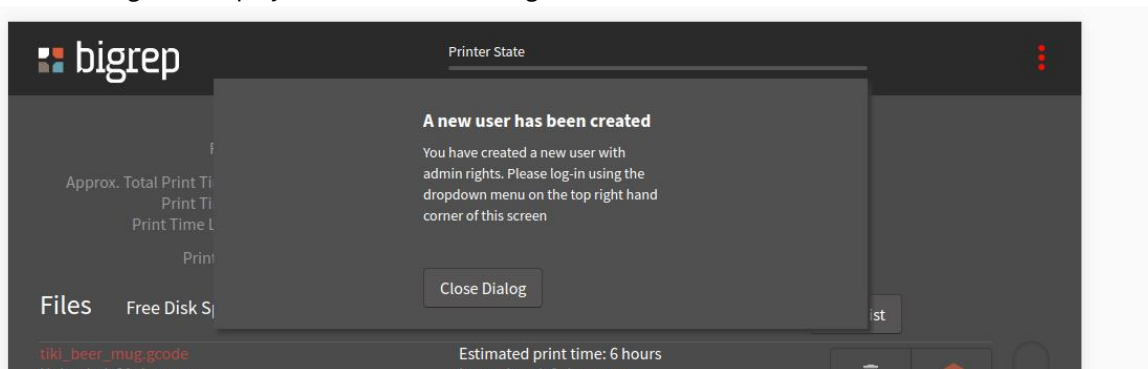
### IMPORTANT NOTE:

The Admin User is very important to have access to some settings of the machine. Create the user that we suggest so that we can have access if needed and the password is not missed.

1. After restarting the machine twice, wait until the UI launches (it may take some time)
2. You will be asked for creating a new user. Type in the following user name and password:  
Name: admin  
Password: BigRep66!



3. Confirm the password and click on “Create New User”
4. A new message will display. Click on “Close Dialog”



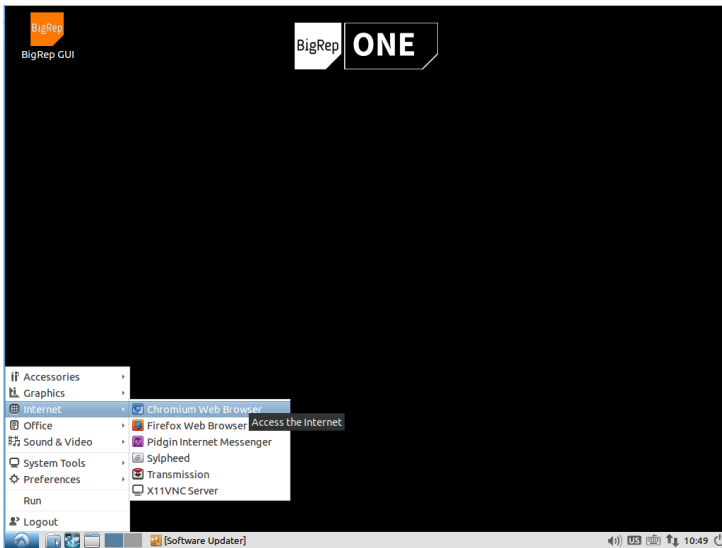
## Step 3. Create a New User

### IMPORTANT NOTE:

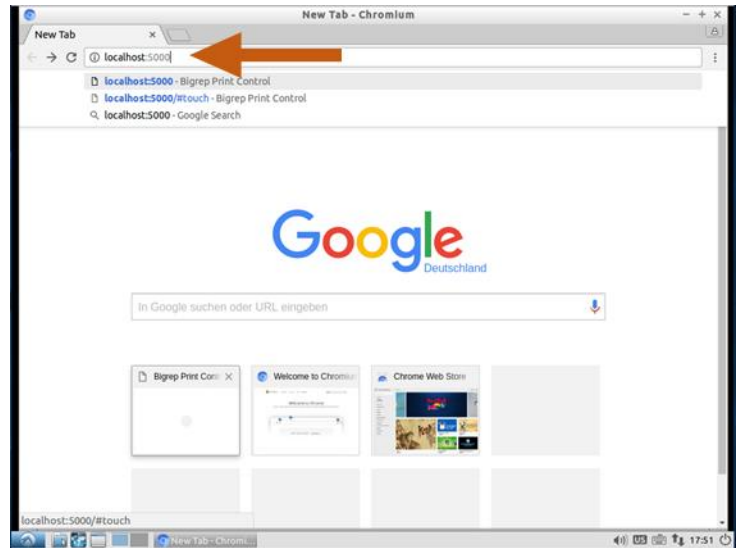
Normally, you work with this user instead of the Admin User. This will guarantee that important settings that may damage the machine are not changed by unexperienced users.

Click on “Alt + F4” on the keyboard to close BigRep UI

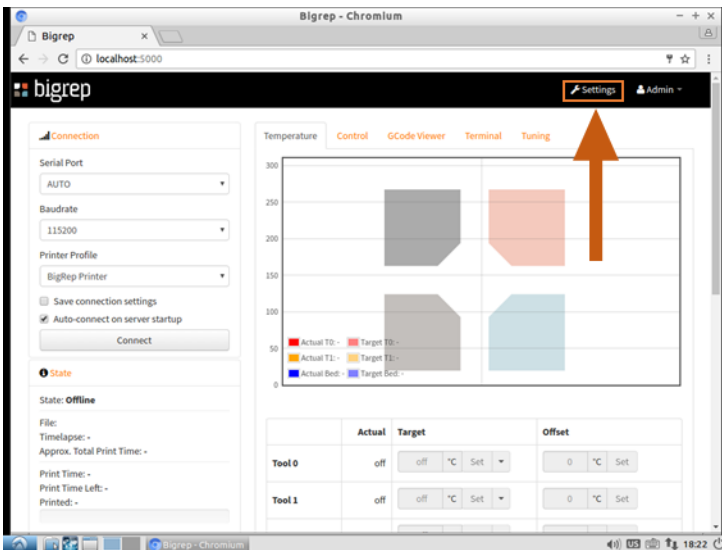
1. Go to start menu > Internet > Chromium web browser



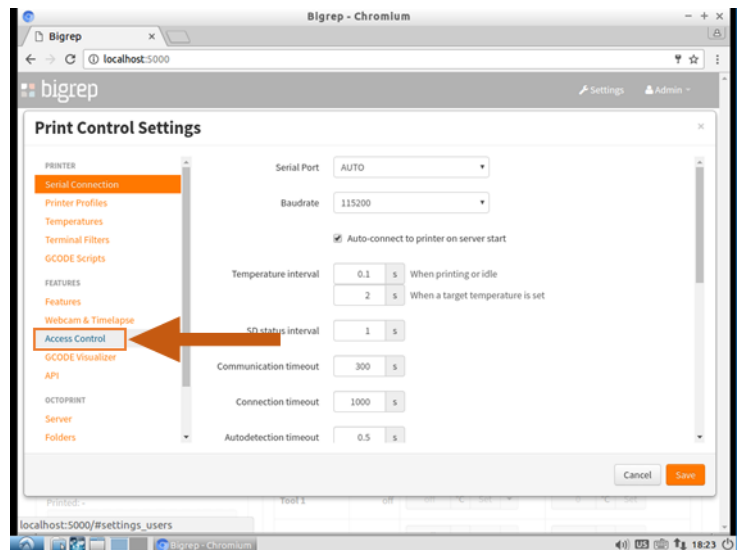
2. Enter localhost:5000 into the url field



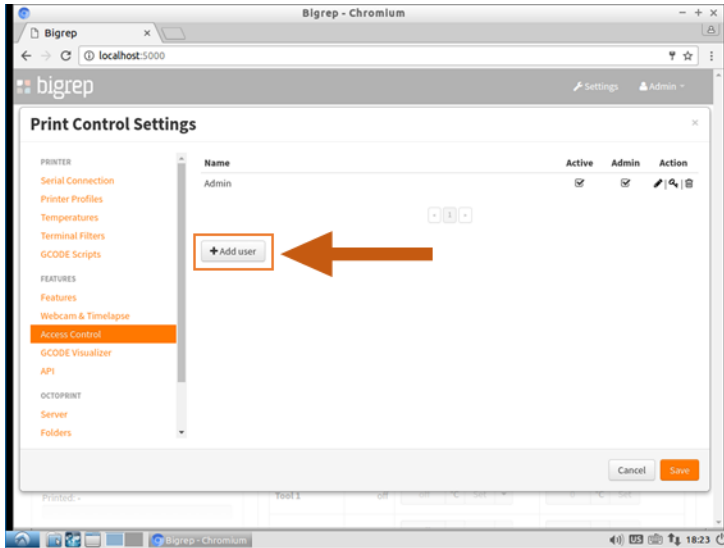
3. Click settings in the top right of the screen



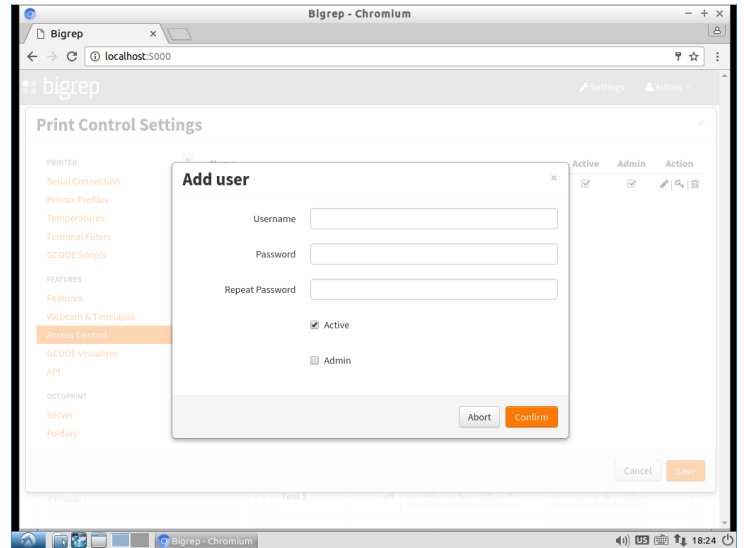
4. Go to Access Control



5. Click on “+ Add User”



6. Give a Username and Password of your choice and save it.

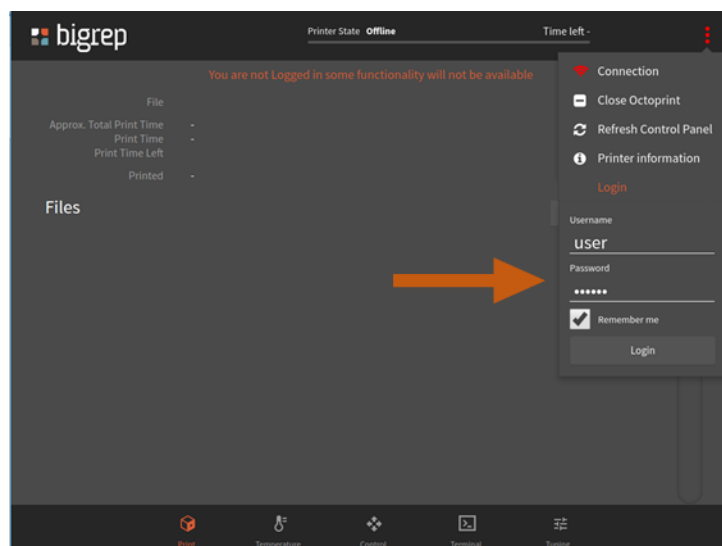


7. write the user name down inside the cover of your BigRep Manual

8. Reboot the machine

## Step 4. Log In

1. After restarting the machine, the UI will automatically open (it can be about 3 minutes on first-boot due to setup)
2. Go the dropdown top right of the screen and select the option Login
3. Log in using the user that you created, and check the “Remember me” box so that you do not need to login next time you turn the printer on



4. Go to the Terminal Menu and type in M503 to activate the tuning section

## Step 5. Print!

The machine is ready! Choose your next print and start printing.